

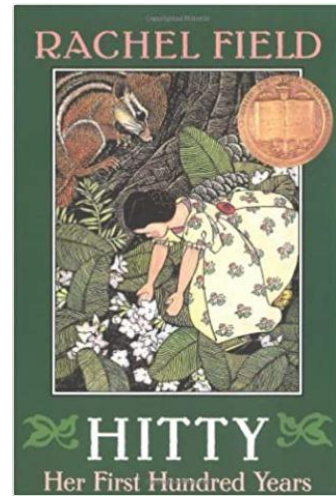
# Hitty Doll Reference Photos

By Dave Keele

Every Christmas I carve something special for my grandchildren. This year (2022) I carved a version of the Hitty Doll for each of my two granddaughters.

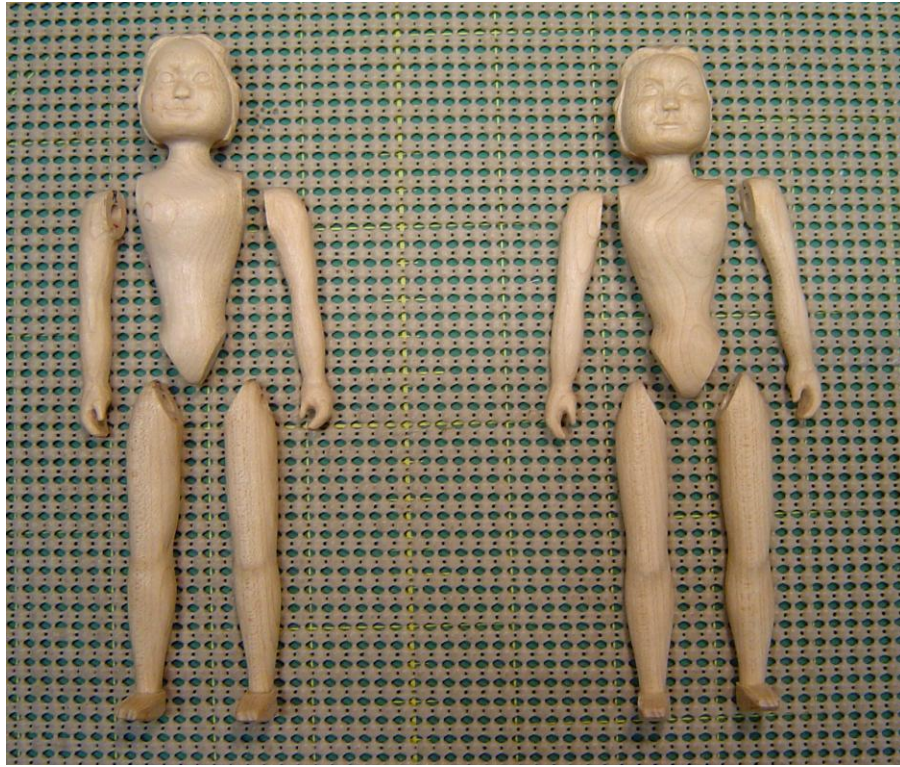
I purchased the book: *Hitty, Her First Hundred Years* and included that as part of their gift. The images in the book helped with shaping the hands and boots.

I made my own pattern based on dimensions I found on the internet. The dolls were carved from hard Maple, using mostly power tools. The arms and legs were jointed using 3/16" dowel pins. The boots were pegged to the legs, but the pegs did not extend through to the bottom of the boots.



After transferring the pattern to the wood, and prior to cutting out the blanks on a band saw, I drilled the holes in the arms, legs, and body for the dowel pins. I then carved the pieces, starting with the heads and faces.





The base was made from hard Maple. A copper tube, placed in the base, holds a stainless-steel welding rod, bent to shape. Plastic tubing was placed on the hoop.



The dress pattern and material was purchased in kit form from *Miss Susannah Studio* Etsy shop.

Carvings were finished with acrylic paint and antiqued with Golden Oak Minwax stain. Steel-wool was used on the hair, boots, and socks to create an “aged” look, then sealed with two coats of satin spray.

